

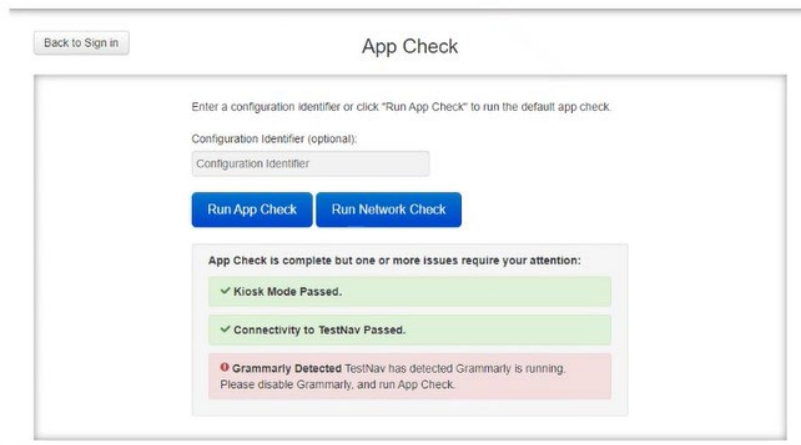
## Kentucky Summative Assessments (KSA) Message- 2/02/2023

### Grammarly Application and Browser Extension

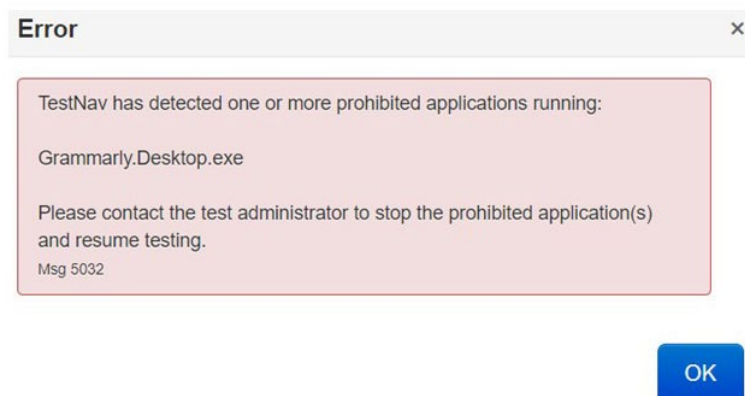
Pearson recently advised the Office of Assessment and Accountability (OAA), that the TestNav application will be capable of detecting the Grammarly application/extension on devices used for the KSA. Grammarly is an application/extension that runs in the background of the device's operating system or browser and can make spelling corrections, grammar corrections and other related benefits when writing. The Grammarly application/extension must be disabled prior to taking the KSA.

#### App Check

Individual devices may be checked by running TestNav and selecting App Check in the drop-down menu in the upper right-hand side of the sign in page. The App Check will provide a notification if it finds an active Grammarly application or extension on that device (see below).



If the Grammarly application/extension is active on a device and a test session is attempted, the following error will be displayed (see below). The TestNav session will not continue until the Grammarly application/extension is disabled or removed.



### **Chrome OS/Chromebooks/Chrome OS Devices**

Because TestNav is operated in the “Kiosk-mode” during testing, only the TestNav application is operational. The Grammarly application/extension is automatically disabled in the Kiosk-mode and no additional actions are required for Chrome OS/Chromebooks/Chrome OS Devices.

### **Apple Devices (Desktop/Laptop/iPad)**

The Grammarly application/extension must be removed and/or disabled from the Apple device and all browsers running on that device. The application may be removed manually or through your desktop management system. Grammarly Browser Extensions must be disabled for all browsers that are installed on that device.

### **Windows Devices**

The Grammarly application/extension must be removed and/or disabled from the Windows device and all browsers running on that device. The application may be removed manually or through your desktop management system (for example: SCCM or In-Tune). Grammarly Browser Extensions must be disabled for all browsers that are installed on that device. You may also consider using Group Policy to enable a Software Restriction rule to disable the “Grammarly.Desktop.exe” for your student users.

Additional technical support can be found at [KY | Technology Setup \(mypearsonsupport.com\)](https://mypearsonsupport.com) or calling Pearson at, (888) 437-1430.